

SOME MORE GUIDELINES

Don't be tempted to allow your puppy to sleep inside the house if you intend changing this as the pup grows older and larger. Either after 1 week or 6 months, the pup will not understand that the rules have changed. This may lead to behavioural problems such as barking and digging.

Warn your neighbours about your new puppy and that s/he might be a bit noisy for the first few days. This will help to alleviate potential conflicts.

If your puppy is to be an outside dog then don't be tempted to go to him/her through the night when s/he is crying - provided you are sure the pup has food, water, warmth and adequate ventilation. Answering the cries will only serve to reinforce the behaviour (in his mind - he cries - the family comes running - just like your children). Once the pup realizes that no attention will be given for this it should settle down. Good thing you warned the neighbours!

Here we've given you some very brief and basic tips to help you look after your new puppy. But if you'd like more information, we have an extensive library you're welcome to use. We also have team members who have a special interest in pet behaviour and who would be only too happy to discuss and help with any problems that you may be having.

At HIGHlands Veterinary Hospital, we know that your greatest concern is "Am I doing everything possible to assure my Pet's best opportunity for Good health and long life?" At HIGHlands Veterinary Hospital, we have written policies, procedures and standards in place to ensure that the answer to this question is "Yes!" It's all part of Our Team Commitment To You.

66 Old Hume Highway

(02) 4875 1144

Braemar NSW 2575

Australia

info@highlandsveterinaryhospital.com.au



A New Puppy

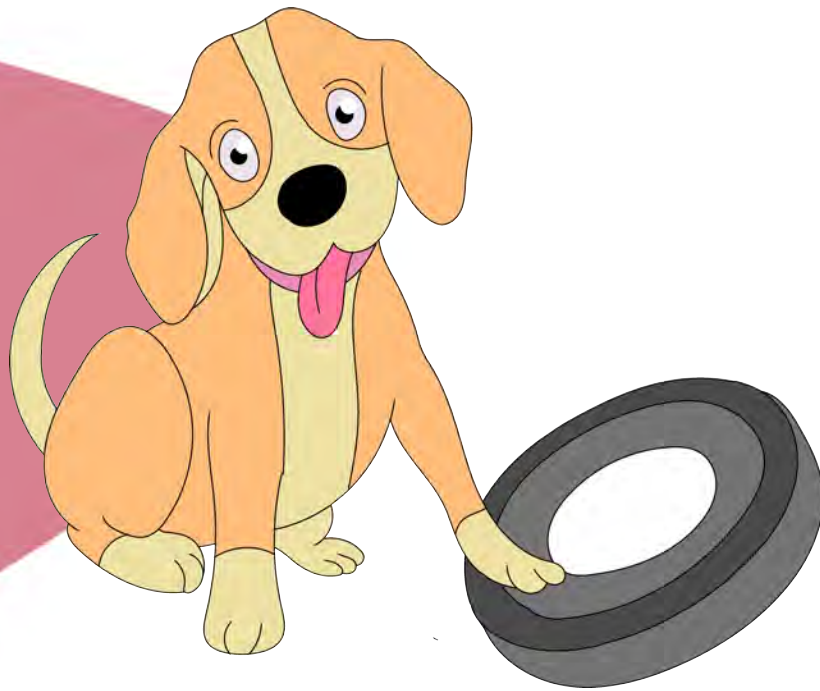
www.highlandsveterinaryhospital.com.au

The day a puppy is away from its litter mates and parents its world is turned upside down forever!!!

When the pup was with its litter mates there were rules set by its siblings and guidance from its mother. It was used to its environment and had plenty of friends and companionship.

NOW YOU ARE THAT PUPPY'S WORLD!

You are responsible for the pup's well-being and companionship. The puppy will look to you now for guidance. So, you must set the rules - the **Road Rules of Life**. Remember also, that cute, little bundle may grow to be ten times its size and weight in the next 20-24 weeks.



HOW DO I SET THESE GROUND RULES??

Firstly, discuss with all family members the rules and guidelines you wish to set for pup (and your family).

- Be CONSISTENT in your treatment of your pup.
- Start the way you wish to continue. Remember your puppy may be living with your family for the next 15 years and what it learns in the first few weeks will set the ground rules for its behaviour for those 15 years.
- Try to encourage children to be passive near the puppy.
- Do not rough play with the pup or play tug of war. These games always end with a winner and loser! You don't wish to spend the next 15 years arguing with your pet as to who is boss. Set yourself (the family unit) as boss on day one and avoid activities that may whittle down this status. You would be better off playing ball games, Frisbee games and engaging in other activities where there is no confrontation (no matter how low key the confrontation may be).
- Provide warmth, shelter and the correct diet.
- Ensure that vaccinations are current and worming is performed regularly (for intestinal worms and heart worm).
- Know the breed and its capabilities. For example, if you have a working breed (Border Collie, Cattle Dog, etc...), you will need to ensure that it gets plenty of exercise.
- Set aside regular play times with your pup, even if just 10 minutes a day, remembering it is now up to your family to be companions and friends for the pup.